

NEXT GENERATION LENSES 2.0



CALEDONIANOPTICAL

Professional Optical Laboratory



CONTENTS

NEXT GENERATION LENSES 2.0

ARC STEADY 2.0

ZONE MOBILE 2.0

ZONE EXTEND 2.0

ZONE BASE 2.0

HDSV 2.0

HDSV DRIVE 2.0

SERENE 2.0

ZONE DRIVE 2.0

OFFICE 2.0

ENTRY 2.0

LENS OPTIONS

LENS COATINGS

YOUR LENS AND COATING RECOMMENDATION

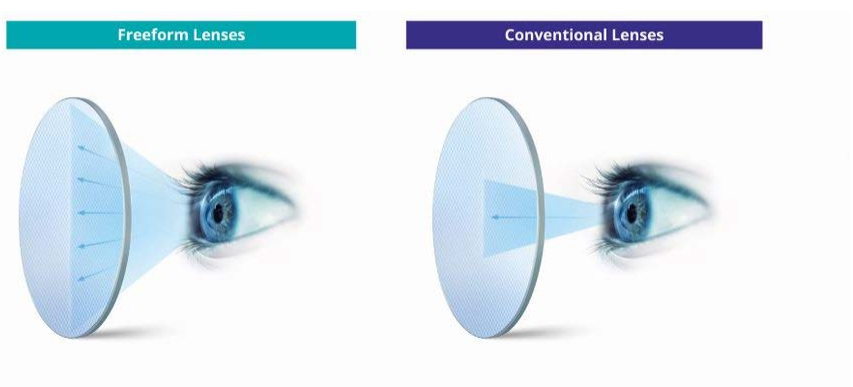
NEXT GENERATION LENSES 2.0

OUR NEXT GENERATION LENSES 2.0

Our 2.0 generation of innovative lenses give a sharper, clearer and more comfortable visual experience. Working with your prescription and the visual requirement of your lifestyle choices, our lenses are available in a variety of designs.

WHAT ARE FREEFORM LENSES?

Freeform lenses consider the interaction between the lens and the eye. Each lens is uniquely calculated to compensate for eye movement, which means you get clearer vision across the lens.



With a conventional lens, the 'optical center' is the only point on the lens with perfect clarity. Now, with our Freeform design, we recalculate every point on the lens to make sure the prescription works for you at every angle.

ARC STEADY 2.0



PERSONALISED FREE-FORM PROGRESSIVE LENS WITH THE BEST AND MOST ADVANCED IOT TECHNOLOGIES.

The lens of the 21st century. ARC Steady as been engineered in the 21st century, for the 21st century.

The lens that best suits our current lifestyle, a hectic and intensive lifestyle that demands the top lens on the market. Its technologies meet, on the one hand, the visual needs of the presbyopes who demand clear and stable vision, even when they're engaged in highly dynamic activities and, on the other hand, reduce swim effect. Finally, on top of that, the optics and aesthetics of ARC Steady lenses are impossible to beat.

IDEAL WEARER

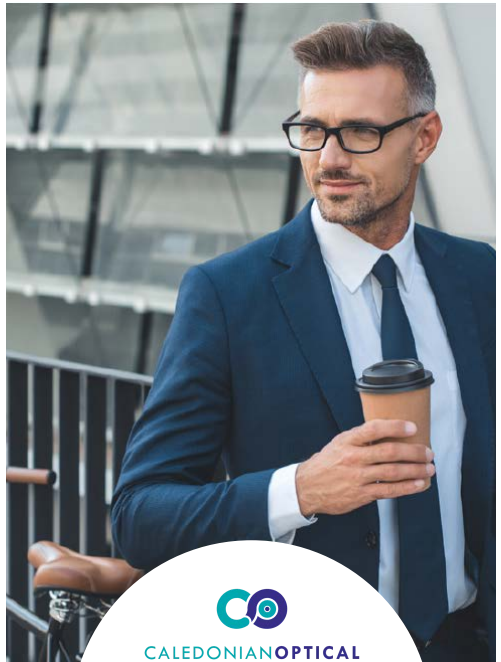
- Those who want the most innovative solution and value the aesthetics for their lenses
- People who are looking for a lens with huge visual fields and minimal distortion
- Wearers with all types of prescription and addition powers, especially from medium to high

BENEFITS

- Daily use
- Superior visual activity
- Improved quality of vision
- Precise and comfortable focus for all working distances in any direction of gaze
- Better performance in binocular vision
- Higher image stability for reduced swim effect
- Superior visual quality of viewing digital devices
- Highly personalised lens
- Improved aesthetics in many prescriptions

FEATURES

- Variable Base Curve
- Flatter Lenses
- Personalisation
- Compensated Power
- Optimised for Accommodative Object Space
- Consistency
- Strict Control of Mean Power in Distance Area of The Lens
- Binocular Balance Improvement



CALEDONIANOPTICAL

ZONE MOBILE 2.0



UNPRECEDENTED VISUAL QUALITY THANKS TO THIS PERSONALISED FREE-FORM PROGRESSIVE LENS

The Zone Mobile 2.0 has not only revolutionised the concept of personalisation by considering the wearer's accommodative ability to focus on different distances but also have drastically reduced swim effect caused by lateral image distortion, resulting in unprecedented visual quality and wide visual ranges at any distance.



Office
Work



Shopping

IDEAL WEARER

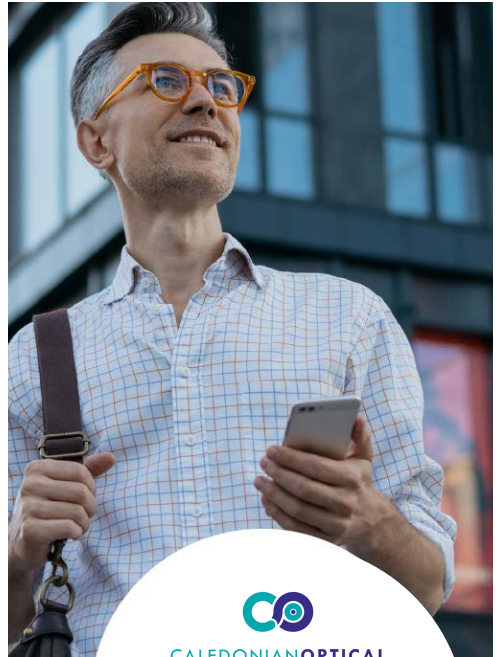
- Those who need a very good lens and better visual quality and comfort
- Experience or novice progressive wearer who desire wide visual fields for both near and distance vision
- Wearers with all types of prescription and addition powers

BENEFITS

- Wide and balanced visual fields for all distances
- Precise and comfortable focusing for all working distances in any gaze direction
- Peripheral blur reduction
- Higher image stability for reduced swim effect
- Superior visual quality when using digital devices
- Highly personalised lens

FEATURES

- Personalisation
- Compensated Power
- Optimised For Accommodative Object
- Consistency
- Strict Control of Mean Power In Distance Area of Lens



ZONE EXTEND 2.0



THIS DISTANCE VISION YOU DID NOT KNOW YOU NEEDED.

The Zone Extend 2.0 achieves marvelous and panoramic distance vision, this personalised free-form progressive lens also provides notable comfort and total freedom of lateral eye movement in distance, which, added to the cutting-edge technologies it has, allowed wearers to visualise objects and other things with high precision and clarity.



Golfing



Driving

IDEAL WEARER

- Those people who consider having a premium lens and an extraordinary visual quality and comfort quite relevant.
- Experience or novice progressive wearer who require the wider distance visual field.

BENEFITS

- Improve distance vision
- Extra-large and panoramic distance visual field
- Superior comfort and high-definition vision, especially when performing distance visual activities.
- Peripheral blur reduction
- Higher image stability for reduced swim effect
- Freedom of lateral eye movement in distance
- Highly personalised lens

FEATURES

- Personalisation
- Compensated Power
- Optimised For Accommodative Object
- Consistency
- Strict Control of Mean Power In Distance Area of Lens



ZONE BASE 2.0



OUTSTANDING INTERMEDIATE VISION.

In order to satisfy these wearers' needs, Zone Base 2.0 is a personalised free-form progressive lens that is capable of meeting the demands of a huge number of people by having a smooth transition between the different fields, a wide intermediate vision, advanced technologies, an easy and quick adaption, an extraordinary image stability and the most natural vision.



Eating Out



Gardening

IDEAL WEARER

- People who want to enjoy an outstanding solution with unbeatable comfort and visual quality
- Beginners, non-adapted patients and experienced progressive wearers who prefer a fantastic intermediate vision above all else.
- Wearers with all types of prescription and addition powers

BENEFITS

- Extra-soft lens design.
- Wide intermediate visual field.
- Intermediate zone easier to find.
- Peripheral blur reduction.
- High image stability for reduced swim effect.
- Promotes easy and quick adaptation.
- Highly personalised lens.

FEATURES

- Personalisation
- Compensated Power
- Optimised For Accommodative Object
- Consistency
- Strict Control of Mean Power In Distance Area of Lens



HDSV 2.0



PERSONALISED FREE-FORM SINGLE VISION LENS THAT, THANKS TO ITS STATE-OF-THE-ART DESIGN, OFFER UNPARALLELED VISUAL QUALITY.

The ideal lens to enjoy a day to day without limits that needs lenses that are up to it. High Definition Single Vision lenses were designed for modern lifestyles. The visual quality, clarity and comfort of these premium single vision lenses are impeccable which, added to the most advanced technologies that it has, make this lens the perfect one for active young people.



Cinema



Texting

IDEAL WEARER

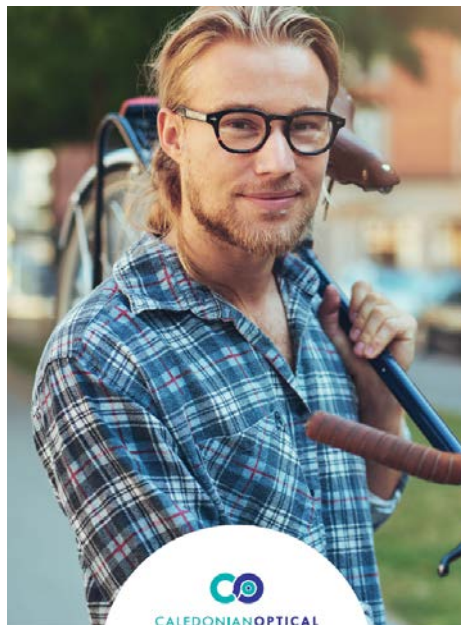
- Wearers who are looking for the most innovative lens.
- Active wearers with demanding visual tasks.
- Digitally connected wearers.
- Wearers with all types of prescription powers.

BENEFITS

- Impeccable visual quality, especially for high prescriptions and wrapped frames.
- Comfortable and accurate focusing at all distances.
- Near elimination for peripheral blur.
- Superior visual quality of viewing digital devices.

FEATURES

- Personalisation
- Compensated Power
- Optimised For Accommodative Object
- Consistency



HDSV DRIVE 2.0



PERSONALISED FREE-FORM SINGLE VISION THAT, THANKS TO ITS NIGHT VISION-ZONE, ALLOWS A COMFORTABLE AND SAFE DRIVING.

Personalised free-form single vision that, thanks to its night vision zone, allows a comfortable and safe drive. HDSV Drive 2.0 is the best personalised free-form single vision for non-presbyopic drivers who demand wonderful visual quality for driving at anytime. HDSV 2.0 drive lenses include a night vision zone that compensates for the difference in refractive error that occurs between day and night translating, all this into an impeccable visual acuity and less eyestrain.



Driving

IDEAL WEARER

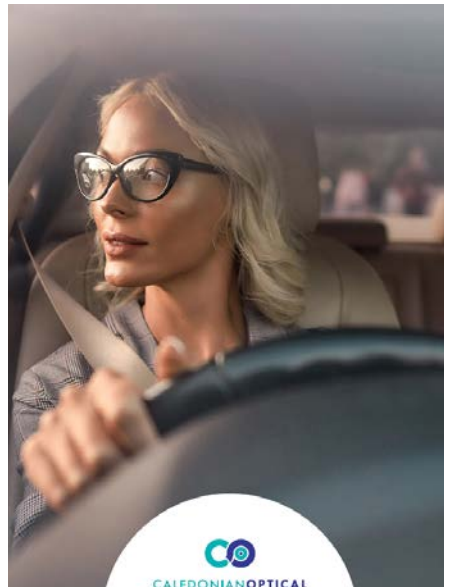
- Non-presbyopic drivers who are looking for an unique lens
- Wearers looking for more comfort, visual quality, and safety while driving
- Wearers who feel they see worse at night than during the day
- Wearers with all types of prescription powers.

BENEFITS

- Impeccable visual quality, especially for high prescriptions and wrapped frames.
- Improves the visual experience for the wearer when driving in daytime and night time conditions.
- Compensates for the effects of night myopia with a unique zone to provide better focus
- Reduces visual fatigue symptoms when driving at night
- Greater visual acuity for easy focus and more agile eye movement
- Optimised vision for a better view of the dashboard and mirrors.
- Clear vision from center to edge ensuring a comfortable lens with no limitations regardless of the prescription for frame selected.

FEATURES

- Personalisation
- Compensated Power
- Optimised For Accommodative Object
- Consistency



SERENE 2.0



PERSONALISED ANTI-FATIGUE FREE-FORM SINGLE VISION LENS THAT ALLOWS US TO LIVE AND ENJOY OUR LIFE WITHOUT LIMITS.

We live permanently connected to different electronic devices and, therefore, focusing on several screens. A digital and technological lifestyle like this requires healthy and strong eyes. SERENE 2.0 lenses have been developed not only to protect our eyes but also to alleviate the symptoms of eyestrain associated with the use of electronic devices.



Reading



Model
Making



Needle
Craft

IDEAL WEARER

- People who need the most original solution
- Patients with symptoms of visual fatigue
- Pre-presbyopes
- Digitally connected wearers
- Wearers with all types of prescription

BENEFITS

- More relaxed vision requiring less accommodative effort
- Design to significantly improve reading speed on digital devices
- Comfortable and precise focus at all distances
- Near elimination of peripheral blur
- Superior visual quality of viewing digital devices
- Impeccable visual quality and precise focus

FEATURES

- Personalisation
- Compensated Power
- Optimised For Accommodative Object
- Consistency



ZONE DRIVE 2.0



PERSONALISED FREE-FORM PROGRESSIVE LENS ENGINEERED SPECIFICALLY FOR DRIVERS BY INCLUDING A NIGHT VISION ZONE

Zone Drive 2.0 lens is the ideal lens for driving. This is because its power distribution is specifically adapted for it. Moreover, the night vision zone of this personalisation free-form progressive lens compensates for the difference in refractive error that occurs between day and night, providing greater visual acuity and reducing eyestrain.



Driving

IDEAL WEARER

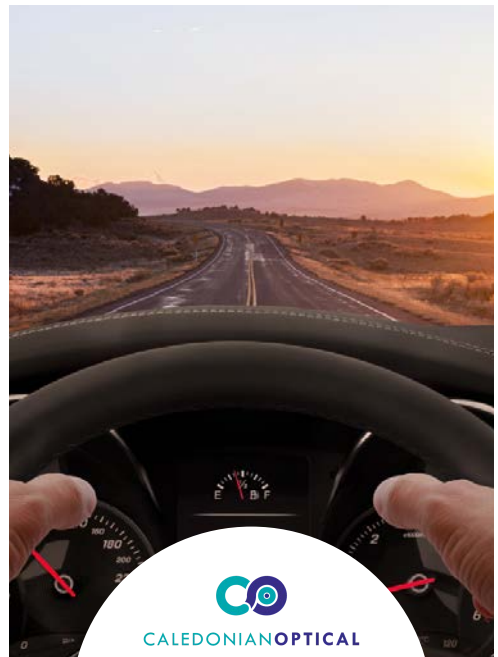
- Drivers looking for the most innovative lens.
- Wearers looking for high comfort, visual quality and safety while driving
- Wearers who feel they see worse at night than during the day
- Wearers with all types of prescription and addition powers

BENEFITS

- Improves the visual experience of the wearer when driving in daytime and nighttime conditions.
- Compensates for the effects of night myopia with a unique zone to provide better focus.
- Optimised vision for a better view of the dashboard and mirrors.
- Reduces visual fatigue symptoms when driving at night.
- Great visual acuity for easy focus and more agile eye movement.

FEATURES

- Personalisation
- Compensated Power
- Optimised For Accommodative Object
- Consistency



OFFICE 2.0

GREAT PERFORMANCE IN INTERMEDIATE AND NEAR WITH THIS PERSONALISED FREE-FORM LENS.

With an increase of remote / hybrid working, a new way of working requires a new way of seeing. Office 2.0 has been especially engineered for these kinds of wearers since it adjusts to wearers' needs and, at the same time, offer the best vision for both visual zones, turning the current way of working into a wonderful experience.



Office
Work



Catering

IDEAL WEARER

- Those who spend extended periods of time viewing objects in near and intermediate distances
- New presbyopes
- Remote workers
- Wearers with all types of prescription and addition powers

Do not drive while using Office lenses

BENEFITS

- Maximum intermediate and near field vision.
- Improved postural ergonomics avoiding unnecessary head movements.
- Comfortable and precise focusing, especially when using electronic devices
- Excellent dynamic vision, easy transition between near and intermediate visual fields
- Immediate adaptation
- Elimination of peripheral blur
- Superior visual quality when using digital devices

FEATURES

- Personalisation
- Compensated Power
- Optimised For Accommodative Object
- Consistency



ENTRY 2.0



FREE-FORM PROGRESSIVE LENS THAT STANDS OUT FOR ACHIEVING HIGH WEARER SATISFACTIONS

This all-purpose free-form progressive lens, which is completely different than any other in its market segment, had been developed for these types of wearers. Available in different design configurations, the Entry 2.0 lens stands out for having an acceptable visual quality and performance, high comfort and a good image stability, achieving high wearer satisfactions.



Reading



Hill
Walking

IDEAL WEARER

- People who need a high-value and reliable solution
- Progressive wearers and/or part-time eyeglass wearer who are looking for an entry-level lens with balanced visual fields.
- Wearers with lower prescription and addition powers

BENEFITS

- Comfortable and all-purpose lens.
- Good quality product.
- Nice performance in any scenario.
- Higher image stability in any scenario
- Higher image stability for reduced swim effect.

FEATURES

- Personalisation
- Compensated Power
- Optimised For Accommodative Object
- Consistency



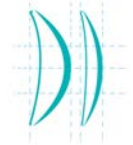
LENS OPTIONS

To ensure your glasses are as comfortable as possible, there are additional lens options available to compliment your perscription.

THINNER AND LIGHTER

Thinner and lighter lenses reduce the overall weight of your glasses, making them more comfortable to wear.

For those with higher prescriptions, the reduced thickness of these lenses gives you the option of wearing a wider range of frames, and also helps reduce the magnification of the eye through the lens.



TRANSITION LENSES

Transition lenses adapt to changing light conditions and protect your eyes by blocking 100% of UV rays. The higher the UV levels exposed to the lens, the darker its shade.



POLARISED LENSES

Polarised lenses are ideal for cutting out glare ad haze from bright sunshine. these are particularly beneficial for water sports and driving as they remove dazzling effects from the sun, providing much clearer vision.



BLUE FILTER

Our blue filter lens helps reduce blue light by up to 20% and can contribute to more comfort for those who spend long hours in front of screens. Also blocks UV rays up to 400m by 100%. Ideal for digital lifestyles.



MATERIAL OPTIONS

Depending on your prescription and lifestyle needs, out lenses can be made from various materials, such as Trivex (TM), which is super tough, and also blocks out 100% of UV rays.



LENS COATINGS

Lens coatings enhance the look and performance of your glasses. Coatings are applied to the surface of lenses to reduce reflection and glare, which enhances your vision. They also make your lenses last longer and are scratch-resistant.

There are three coating options to choose from:

Gemini

our anti-fog lens coating

We use a 12 layer process including a special alloy which creates a permanent AR coating with anti-fog properties. The anti-fog coating spreads water droplets into a liquid film, which keeps the lens clear.

The anti-fog layer is dormant at first, and requires initial activation using a cloth with build in surfactant. The contents of the cloth activate the coating and it will work for up to 4-7 days.

Anti-Fog Efficiency



Reflection Free Efficiency



Scratch Resistance



Water Repellence



Intero

our anti-reflection coating

Intero coating solves the reflectance issue by absorbing UV rays hitting the back of the lens. Thus providing the best all-around UV protection.

All high index lenses we provide have a 100% UV filter embedded in the material, which prevents UV rays from passing through the front of the lens. All standard AR coatings can reflect UV rays from the back surface of the lens into the eyes. This can be as much as 50% of exposure. Our Intero coating solves the reflectance issue by absorbing UV rays hitting the back of the lens. Thus providing the best all-round UV protection.

Reflection Free Efficiency



Scratch Resistance



Water Repellence



UV Reflectance



Diamond

our 24/7 clarity coating

Combined with high quality Antistatic, Super-Hydrophobic and Oleophobic layers, the lenses are significantly protected against the build-up of contaminants such as dust, grime and water from landing and staying on the lens. Thus, giving exceptional clarity throughout the day.

And to protect the lens further, extra hard coat layers are built into the process to provide an outstanding resistance to scratches.

Our IC Diamond coating is regularly tested to ensure consistency throughout. It goes through the following procedures: Saltwater Boiling test, Steel Wool Abrasion test, Eraser Abrasion test, Humidity test, Dry Heat Crack test & Hydrophobic properties test.

Reflection Free Efficiency



Scratch Resistance



Water Repellence



Smudge Repellence



Dust Repellence



YOUR LENS AND COATING RECOMMENDATION



Established in 1976 in Aberdeen, Caledonian Optical uses state-of-the-art equipment in order to provide a range of premium digital lenses.

caledonianoptical.com